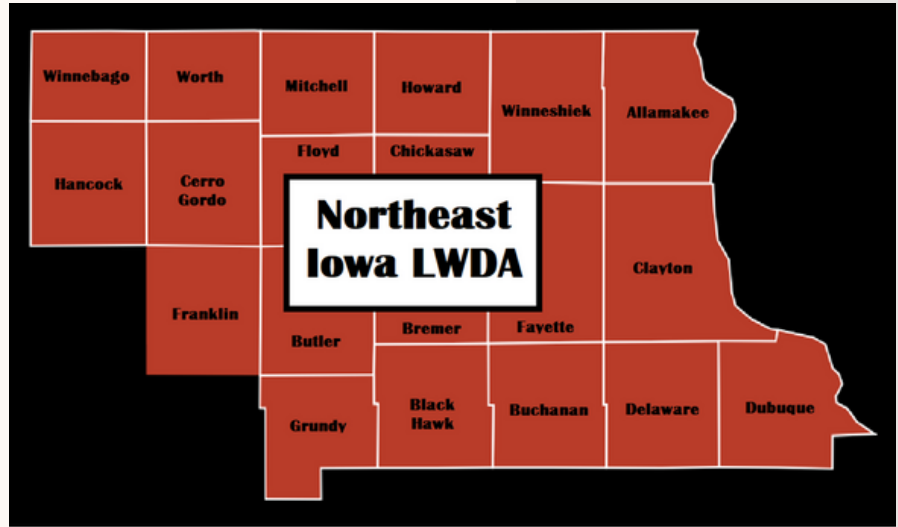


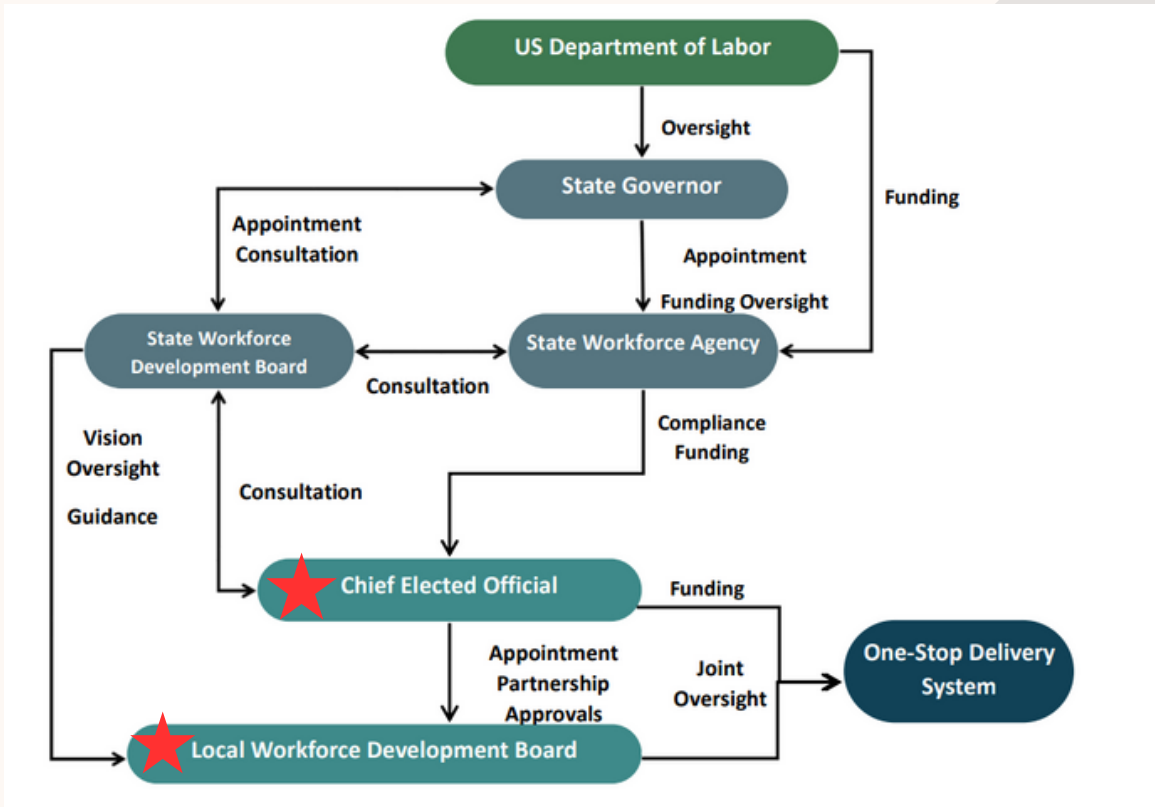


CEO: Chief Elected Official

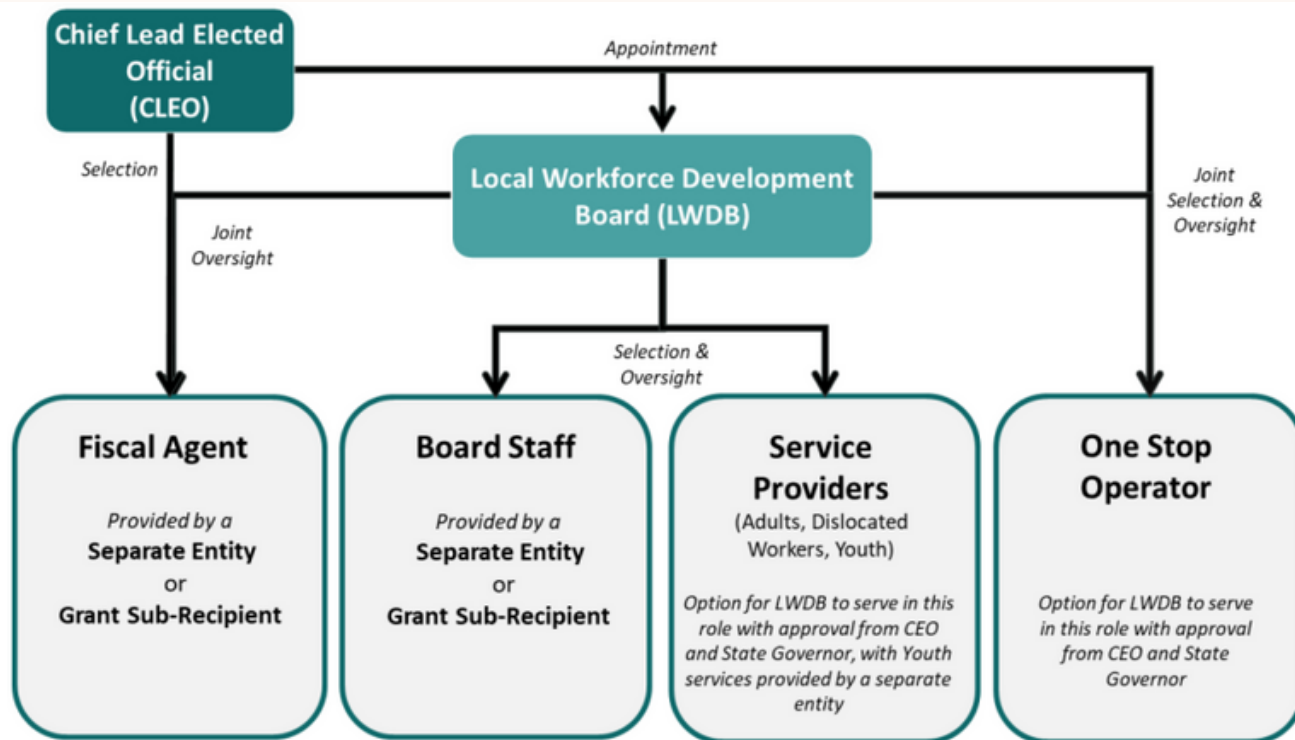
As a CEO, you are a critical voice in how the workforce system operates and supports your community. The Northeast Iowa Local Workforce Development Area (LWDA) holds local control over its 20 counties.



Much of the funding for the workforce system comes through federally mandated programs, such as WIOA (Workforce Innovation and Opportunity Act), and this law requires a formal governance structure with clearly defined roles. The graphic below provides a high level perspective of the stakeholders and the interconnectivity of their roles within the system.



The LWDB works with employers and the workforce system to develop the Local WIOA Plan, policies, and investments that support strategies that drive regional economies, including sector partnerships, career pathways, and high quality, customer-centered service delivery. LWDBs are charged with implementing the WIOA vision outlined in the State Plan and LWDB members have a unique opportunity to ensure strategic investments in talent development that meet the needs of local businesses. The mission and vision of local boards parallels the state board.



Fiscal Agent: Central Iowa Juvenile Detention Center

- Kassie Ruth, kassie@cijdc.com

Board Staff: Four Board Staff Members

- Executive Director: Taylor Williams, taylor@northeastiwdb.org
- Associate Director: Erika Lippmann, erika@northeastiwdb.org
- Compliance Specialist: Caraline Eggena, caraline@northeastiwdb.org
- Board Support: Johnna Forbes, boardsupport@northeastiwdb.org

Service Provider: Goodwill Industries

One Stop Operator: Consortium of Operations Managers at the AJCs (American Job Center)

- Karen Siler, karen.siler@iwd.iowa.gov
- Todd Oesterle, todd.oesterle@iwd.iowa.gov
- Marla Loecke, marla.loecke@iwd.iowa.gov

Partners: All mandatory partners should be encouraged to attend LWDB meetings and participate, as needed, on committees and task forces.

Core Partners

WIOA Title	Federal Legislation/Act	Iowa Administering Agency
I	Adult, Dislocated Worker, Youth	Iowa Workforce Development
II	Adult Education & Family Literacy	Iowa Department of Education
III	Wagner Peyser Act	Iowa Workforce Development
IV	Rehabilitation Act of 1973	Iowa Vocational Rehabilitation Services and Iowa Department for the Blind

Other Required (non- Core) Partners

- Career and Technical Education
- Senior Community Services Employment Program (SCSEP)
- Job Corps
- Youth Build
- Native American Program
- National Farmworker Jobs Program
- State Unemployment Compensation Programs
- Job for Veterans State Grant (JVSG)
- Reentry Employment Opportunities
- Housing and Urban Development Employment & Training Programs
- Community Services Block Grant Employment & Training Program
- Temporary Assistance to Needy Families (TANF)

Partner Requirements

- Provide access to their programs through the one-stop system
- Use their program’s funds to:
 - a. Provide career services
 - b. Maintain the one-stop system and jointly fund it
- Sign the Memorandum of Understanding (MOU) with the LWDB
- Participate in the operation of the system
- Provide representation on the LWDB, as required, and participate on committees of the LWDB, as needed

CEO Duties

Appoint/Select Functions

- I. Select a CLEO- Chief Lead Elected Official
- II. Appoint LWDB Members
- III. Create initial Bylaws for the LWDB
- IV. Appoint a Fiscal Agent
- V. Select the One Stop Operator (OSO)

Review/Approve Functions

- I. Approve LWDB Budget
- II. Approve of Non-Mandatory One Stop Partners
- III. Comment on State Plan
- IV. Negotiate Performance Measures
- V. Approve Memorandum of Understanding (MOU) and Infrastructure Funding Agreement (IFA)
- VI. May Approve LWDB to be the One Stop Operator
- VII. May Approve the LWDB to be the Adult/Dislocated Worker Career Services Provider

High Level Oversight Role

- I. CEO Shared Liability Agreement
- II. Conduct Oversight of Local One Stop System Adult, Dislocated Worker, and Youth Programs
- III. State Workforce Development Board
- IV. Request LWDA Designation
- V. Transfer Funds Between Programs
- VI. LWDB Reorganization Process
- VII. Allocation Formulas for In State Adult and Youth Funds

Strategic Planning Functions

- I. Develop, Implement, and Modify the Local Plan
- II. Conduct Regional Planning, if applicable

*For more detailed information please see Iowa Chief Elected Officials Guide